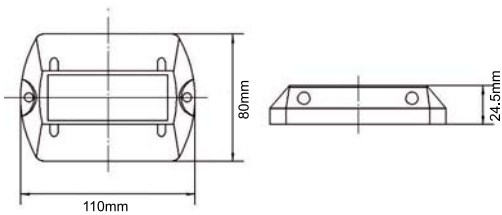




RETROUVEZ PLUS
D'INFOS et DE VIDEOS
sur
www.signalisation-urbaine.fr



Item No.: MSL-R15

- Material of light: Super light-permeability polycarbonate (PC)
- Solar cell: Crystalline silicon 2.5V/120mA
- Storage component: Ni-MH AA 1.2V/900mAh battery
- Light source: 4pcs (2x2pcs) of Φ 8mm super bright LEDs
- Color of light: Red, green, blue, white, yellow
- Light mode: Flash type
- Work Temperature: -25 to +75°C
- Work Time: Over 12 hrs after 1 sunny day charge,
3 nights contineously if battery fully charged
- Visible distance: More than 800m
- Compression Resistance: 10 tons
- IP rate: IP67
- Product size: 110x80x24.5mm N.W.: 0.17kg
- Life time: Over 3 years (fitted with Ni-Mh battery)

Existe en super
capacité donc
sans batterie -
sans maintenance



S3-10

Solar Road
Stud

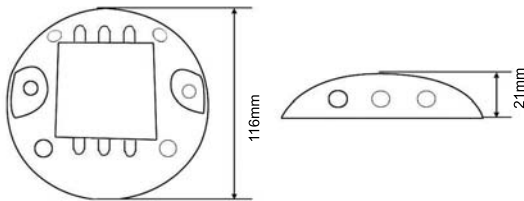
Solar Road Stud

S3-11

Solar Road Stud



RETROUVEZ PLUS
D'INFOS et DE VIDEOS
sur
www.signalisation-urbaine.fr



Item No.: MSL-R21

- Material of light: Super light-permeability polycarbonate (PC)
- Solar cell: Crystalline silicon 3V/90mA
- Storage component: Ni-MH AA 2.4V/700mAh battery
- Light source: 6pcs (2x3pcs) of Φ 5mm super bright LEDs
- Color of light: Red, green, blue, white, yellow
- Light mode: Flash type
- Work Temperature: -25 to +75 °C
- Work Time: Over 12 hrs after 1 sunny day charge, 3 nights continuously if battery fully charged
- Visible distance: More than 800m
- Compression Resistance: 10 tons
- IP rate: IP67
- Product size: Φ 116x21mm N.w.: 0.20kg
- Life time: Over 3 years (fitted with Ni-Mh battery)

Existe en super
capacité donc
sans batterie -
sans maintenance

maxi led

L'éclairage LED des professionnels

Téléphone: +33 (0) 475 601 113
Fax: +33(0) 475 836 388
Email: contact@maxi-led.fr
web: www.maxi-led.fr